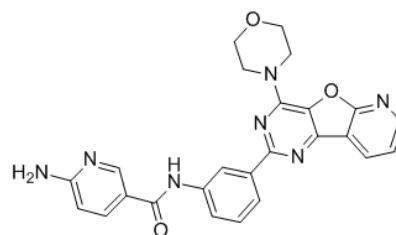


**Product Name** : YM-201636  
**Cat. No.** : PC-43409  
**CAS No.** : 371942-69-7  
**Molecular Formula** : C<sub>25</sub>H<sub>21</sub>N<sub>7</sub>O<sub>3</sub>  
**Molecular Weight** : 467.4793  
**Target** : PIKfyve  
**Solubility** : DMSO: ≥ 47 mg/mL



### Biological Activity

YM-201636 is a potent, selective **PIKfyve** inhibitor with IC<sub>50</sub> of 33 nM, does not inhibit type I $\alpha$ /I $\beta$  PtdInsP kinases even at 10  $\mu$ M (p110 $\alpha$  IC<sub>50</sub>=3.3  $\mu$ M).

YM-201636 shows insensitivity against yeast orthologue of PIKfyve, Fab1; significantly decreases the production of PtdIns(3,5)P<sub>2</sub> by 80% in serum-starved NIH3T3 cells with no effect on serum-stimulated PKB Ser 473 phosphorylation at 0.8  $\mu$ M.

YM-201636 inhibits basal and insulin-activated 2-deoxyglucose uptake with IC<sub>50</sub> of 54 nM.

YM-201636 significantly reduces retroviruses budding from cells; blocks the continuous recycling of the tight junction proteins claudin-1 and claudin-2 in MDCK cells.

### References

Jefferies HB, et al. *EMBO Rep.* 2008 Feb;9(2):164-70.

Osborne SL, et al. *J Biol Chem.* 2008 Feb 1;283(5):2804-13.

Ikonomov OC, et al. *Biochem Biophys Res Commun.* 2009 May 8;382(3):566-70.

Kerr MC, et al. *EMBO J.* 2010 Apr 21;29(8):1331-47.

**Caution: Product has not been fully validated for medical applications. Lab Use Only!**

E-mail: tech@probechem.com